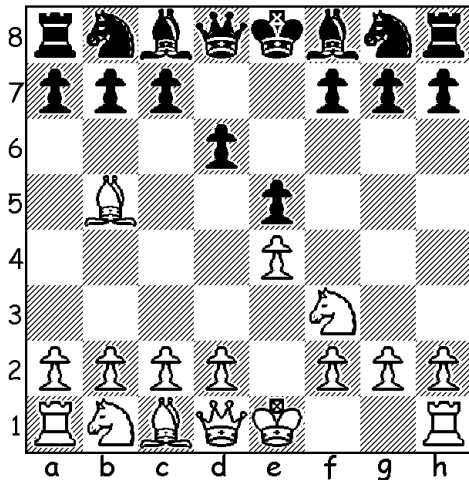


NAME _____

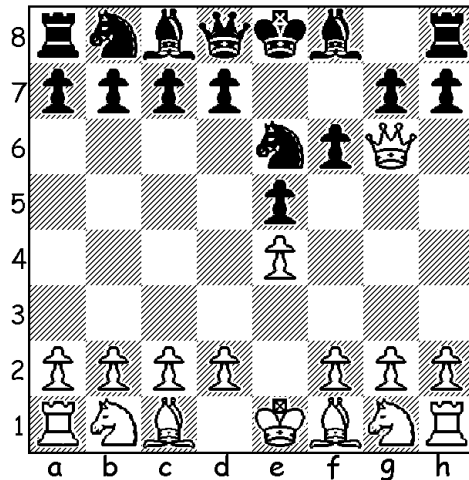
HOW TO GET OUT OF A CHECK?

You already know what a check is: attack on a King. Remember the simple rule: when King is on check (attacked by opponent's piece) no moves are allowed until you get out of check. There are only 3 ways to get out of check: moving the King into safer place, blocking the check by interposing a piece between the King and attacking unit, or capturing the attacking piece. Following diagrams will show you all those options:

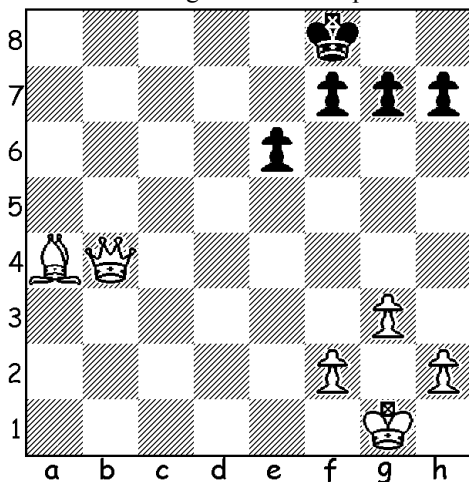
How to protect King from Bishop's check?
Move the King ◊ Block ◊ Capture ◊



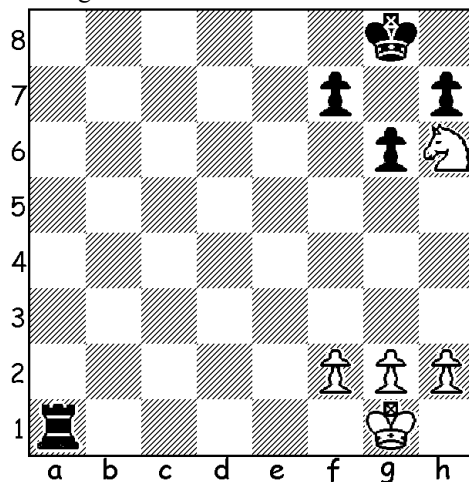
White Queen attacks the King. Would you:
Move the King ◊ Block ◊ Capture ◊



What are black King's options?
Move the King ◊ Block ◊ Capture ◊



Black celebrates the checkmate! Is this mate legal?



Dear friends! Home works not only allow you to practice at home, but also bring you additional points (5) and raise your chances to get a trophy!