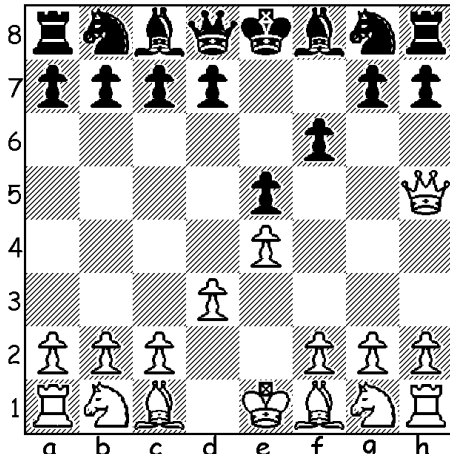


NAME _____

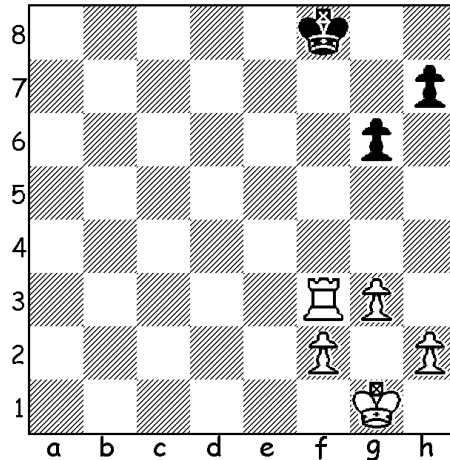
Attacking the King (CHECK)

You can use any piece (except your King) to attack your opponent's King. Such attack is called CHECK. No moves are allowed until a King (sometimes with help of his army) gets rid of the check!

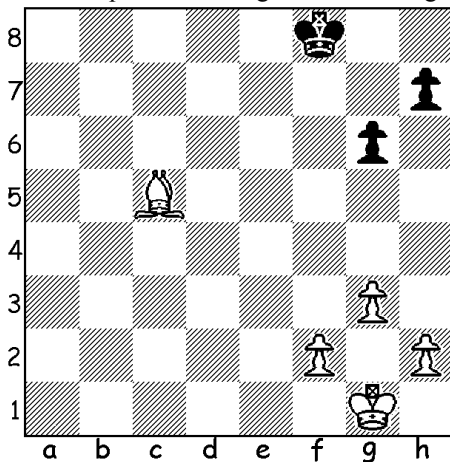
Circle the white piece attacking Black King



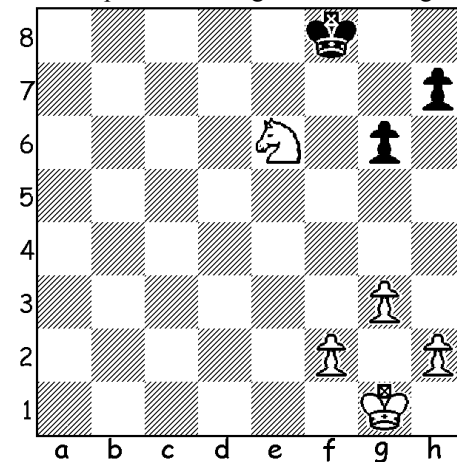
Circle the piece attacking the Black King



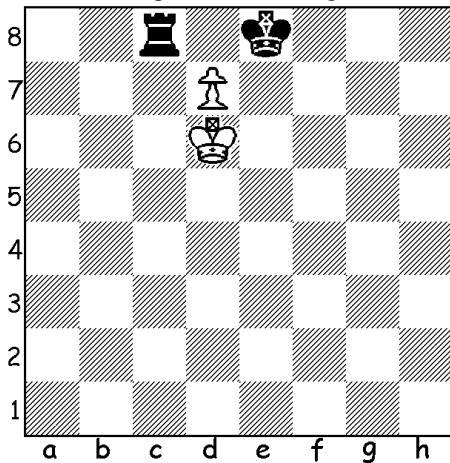
Circle the piece attacking the Black King



Circle the piece attacking the Black King



Which white piece is checking Black King?



Can Kings attack (check) each other?

