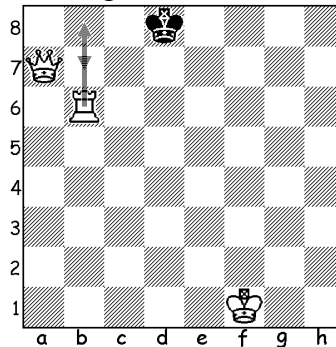
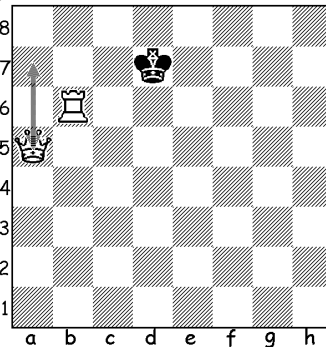
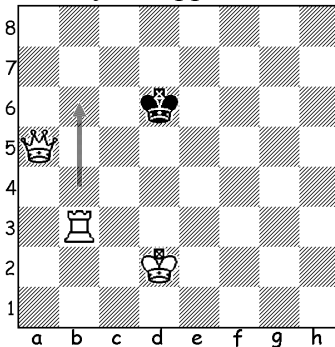


Name _____

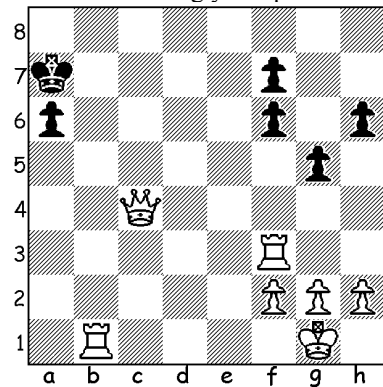
BACK RANK / STAIRCASE MATES

If your opponent is down to only their King, don't try to promote your pawns – two rooks (or queen and rook) are plenty for easy checkmate.

Push your opponent's King toward the rank 8 as shown on diagrams below:

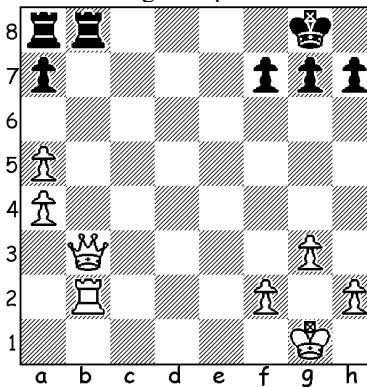


Try to find a mate by sacrificing your queen



Is it checkmate?

Is black King well protected?



Mate in 1

