

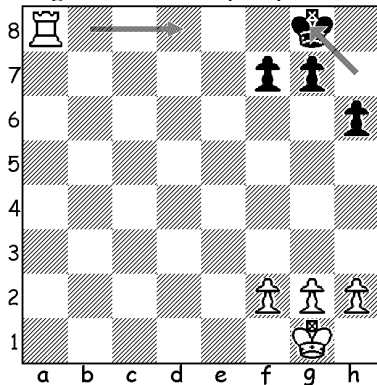
Name \_\_\_\_\_

## BASIC CHECK AND CHECKMATES

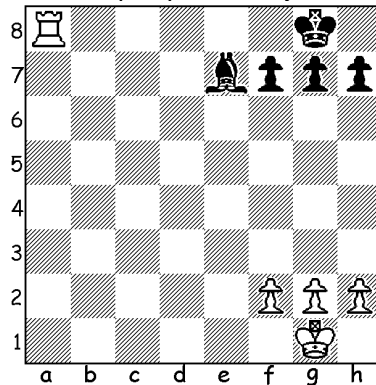
*Congratulations! You know how to attack your opponent's King, and you also remember that this attack is called CHECK. What should the attacked (checked) King do? Get rid of the check!*

*Take a look at examples below and try to find the solution for King being checked. Good luck!*

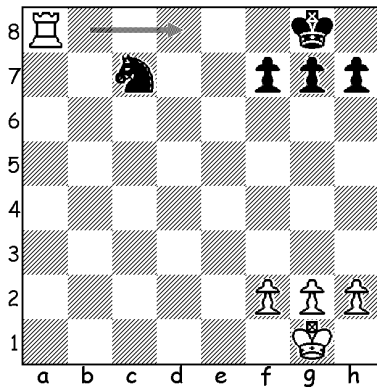
*The white rook checks the black King. Mark the escape square*



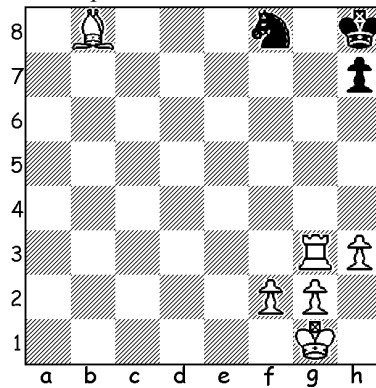
*Looks like black King is in trouble; no escape squares! Any ideas?*



*How to protect black King now?*



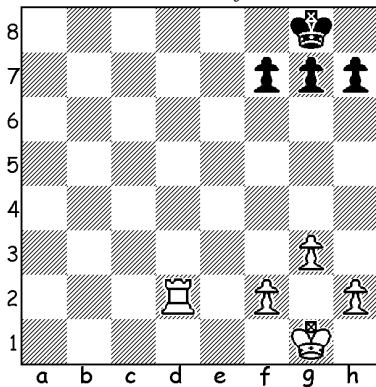
*Will black King escape if white Bishop checks him?*



*It was your first checkmate!*

*Ready for checkmates? Enjoy 2 diagrams below:*

*Find the checkmate for white*



*Find another checkmate for white*

