

NAME _____

CHESS NOTATION

Our today's lesson will be about a special chess language, called Chess Notation which will enable you to read chess diagrams, chess books and magazines. You can also write your chess moves and analyze your games.

Each piece (except pawn) has its own symbol:

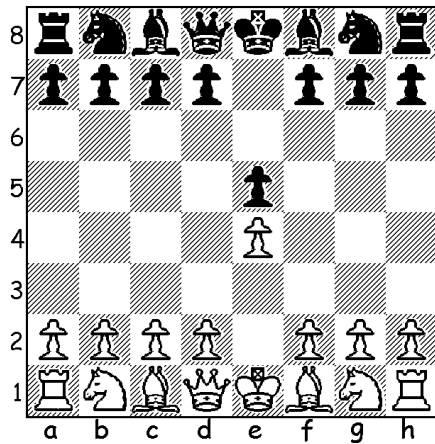
King=K, Queen=Q, Rook=R, Bishop=B, Knight=N.

Special signs are used for tactical moves:

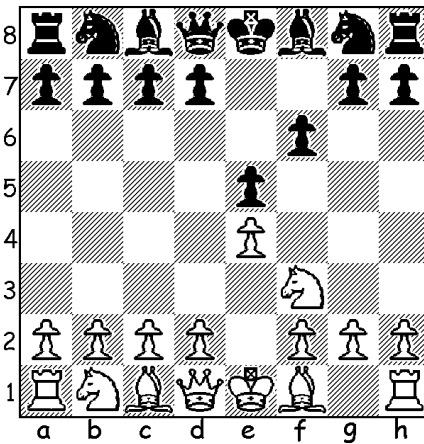
X(capture), 0-0 (Kingside castling), 0-0-0 (Queenside castling), + (check), # (mate).

Please draw arrows to show moves on diagrams below:

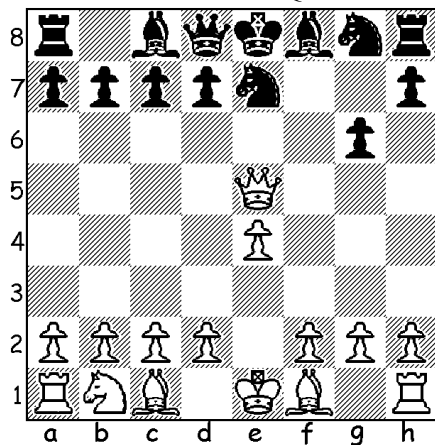
White move: Nf3



White move: Nxe5



White move: Qxh8



White move: Qxf7#

