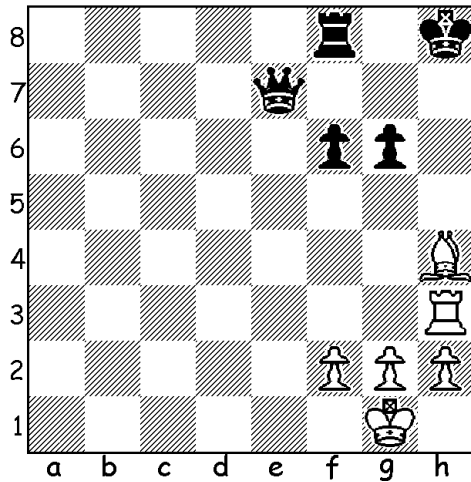


DOUBLE CHECK

Name _____

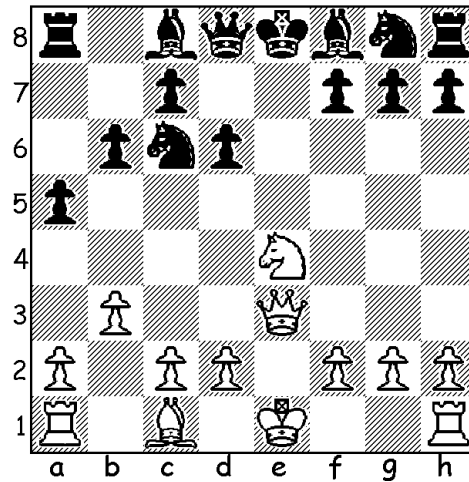
Remember Discovered Check? Double check is part of this great technique. It happens when 2 pieces attack (check) the King at a time. Try to find best moves in diagrams below. You should use chess notation in your answers.

White to move



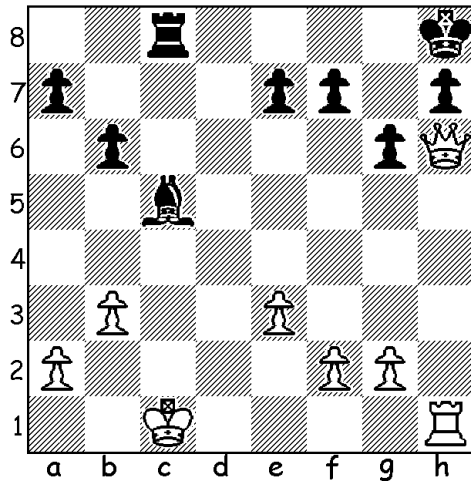
White's move is: _____

White's move leads to mate



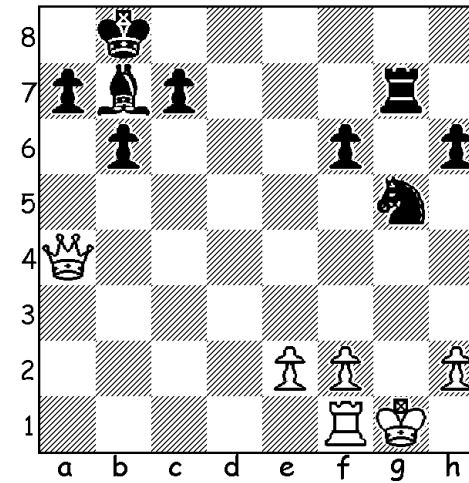
White's move is: _____

Black saves the game



Black's move is: _____

Black's move leads to mate



Black's move is: _____