



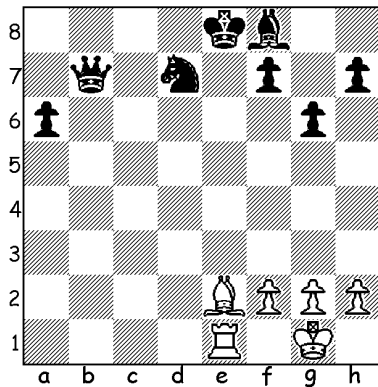
NAME _____

DISCOVERED CHECK

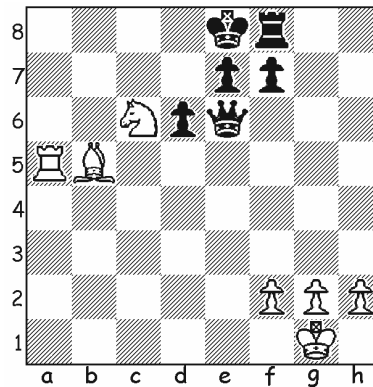
Discovered check is a tactical theme: a piece move, and in so-doing opens a line of attack on opponent's King. A good discovered check often affects the entire game; it tends to depend on what the piece that moves can achieve.

Find the very best moves using discovered check:

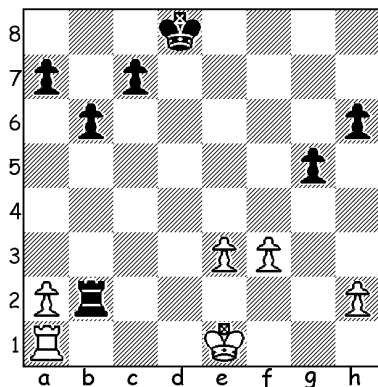
White to move



White to move



Uneasy position for White.
What's the best move?



Can White save the King?

