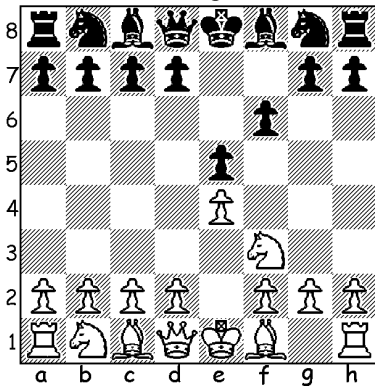


EXPLOSION ON f7

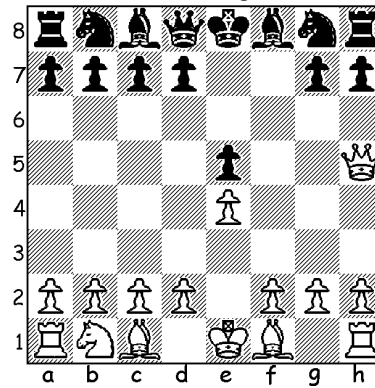
Name _____

Pawns f7 (black) and f2 (white) are very weak because they are protected by King only. Moving these pawns too early (before finishing development or castling) can cause a lot of problems!

Black moves f7 pawn

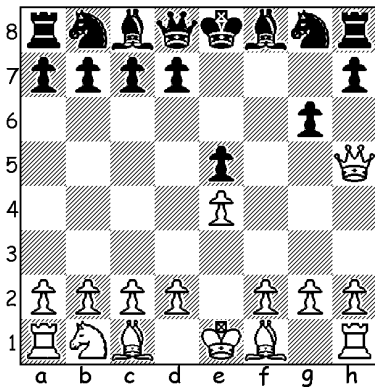


Position after White knight sacrifice

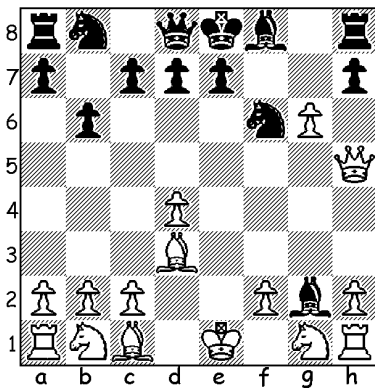


Option 1: Block

Find the best move for White

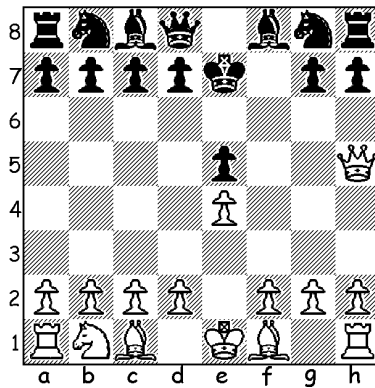


Find the best move for White



Option 2: King moves from check

Find the best move for White



What should Black do?

