

GOOD AND BAD PIECES

NAME _____

All chess pieces start out on the same squares, but once the game begins it's up to players to make them good or bad. When you see your opponent has bad piece(s), look for ways to attack!

DIAGRAM 1: White has a 'good' rook while black rook will be stuck after white's Rd7!

DIAGRAM 2: Black has several problems, but the biggest one is c8 'bad' bishop. After white sacrifices the d3 bishop black becomes helpless:

1. B h7+ Kxh7
2. Ng5+ Bxg5
3. Q h5+ !

Diagram 1

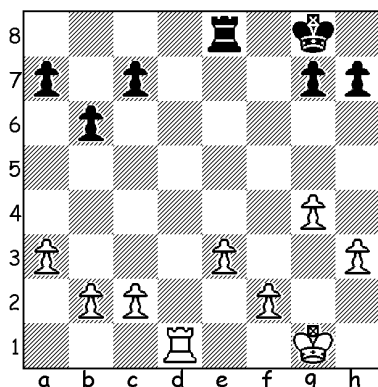


Diagram 2

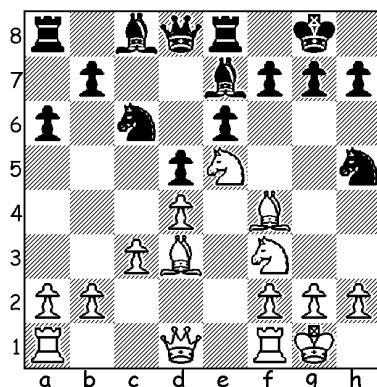


Diagram 3: White has a 'bad' c1 bishop. Can you make it a 'good' one?

Diagram 4: Can you identify black's 'bad' piece(s)?

Diagram 3

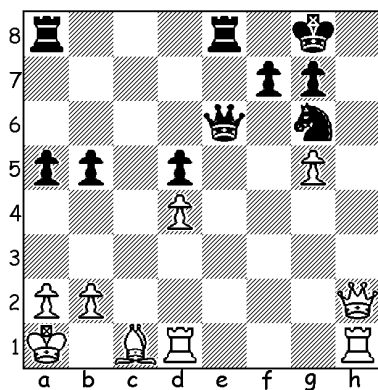


Diagram 4

