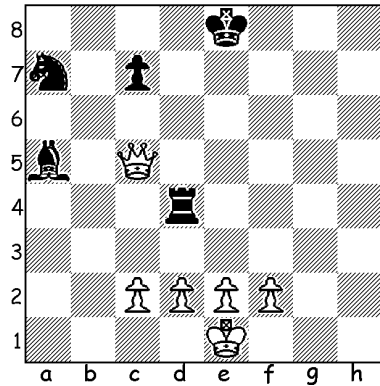


Name \_\_\_\_\_

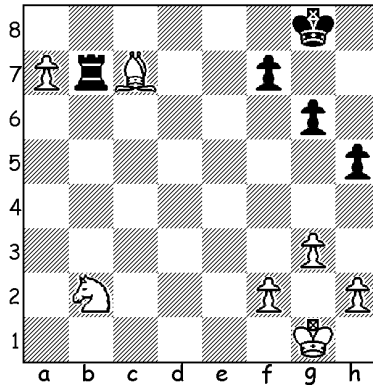
### HOW TO CAPTURE PIECES

*Capturing pieces in chess game is very easy because most pieces move and capture the same way. The attacking piece replaces the captured piece which is removed from the board. The only piece capturing differently from its moves is PAWN which captures DIAGONALLY FORWARD (you should remember that pawns move straight forward only). Try yourself in following examples and get additional points!*

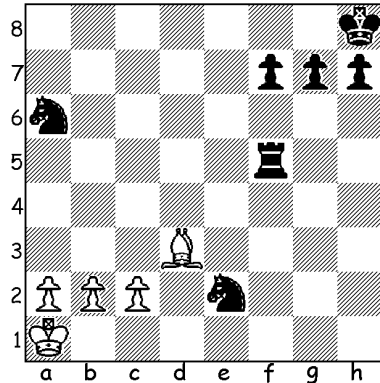
Circle pieces attacked by White Queen



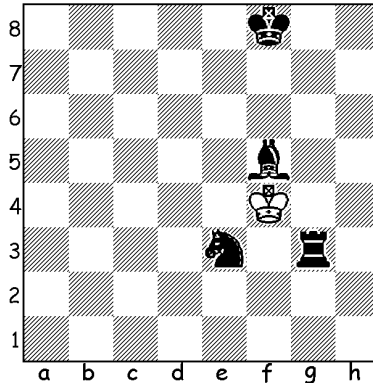
Circle pieces attacked by Black Rook



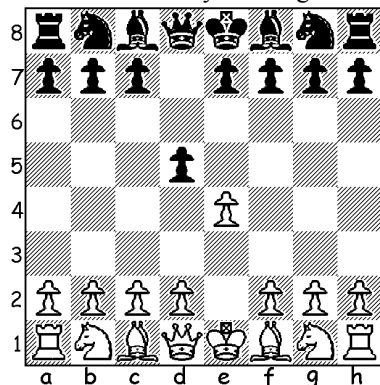
Circle pieces attacked by White Bishop



How many pieces are attacked by White King?



Can the white pawn capture the black one?  
Show the move by drawing an arrow



Circle the black piece able to capture the white pawn in the center

