

Starting Out a Chess Game: Opening Principles!

Name _____

“Opening” is the beginning of a chess game from the first move until all pieces are developed.

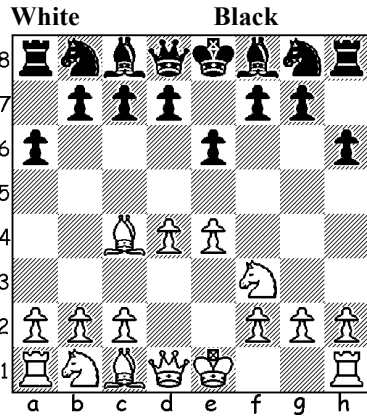
The most important rules in the opening:

-Control of the Center - Development -King’s Safety

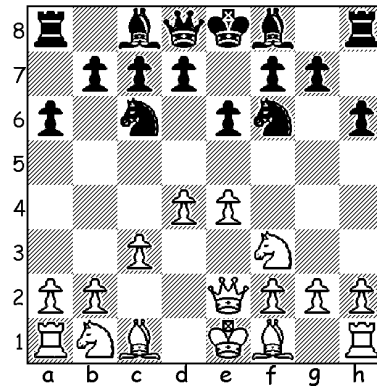
Developing means bringing pieces out from their starting position. It would be smart to develop knights, and then bishops (minor pieces) first followed by major pieces (queen and rooks). Rooks are very strong when they are connected with each other.

The best way to protect your king is to castle early!

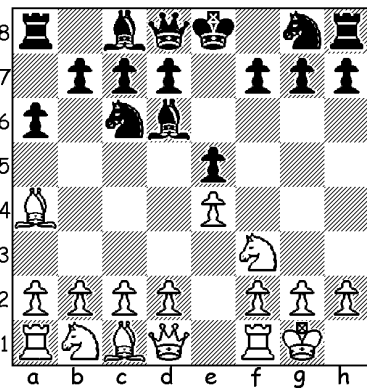
Who has better control of the center?



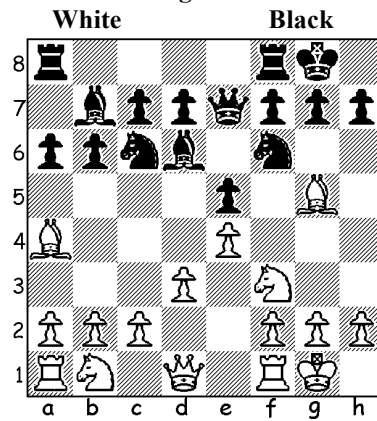
Who has better development?



Whose king is safer?



Who is more prepared to middle game?



Bonus: White just lost the queen, but has better development. Find the best move for white:

