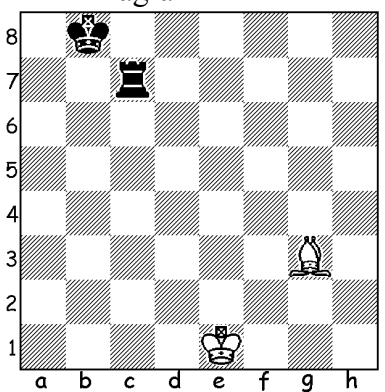


NAME _____

PINS

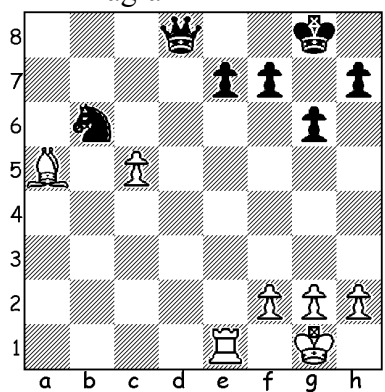
Pin occurs when your opponent cannot move a unit (piece) because either it would open the check (Absolute Pin) or it would lead to a substantial loss (Relative Pin). Please take a look at Diagram 1 and Diagram 2:

Diagram 1



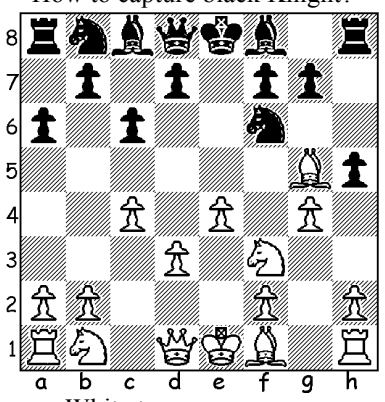
Black can't move the rook

Diagram 2



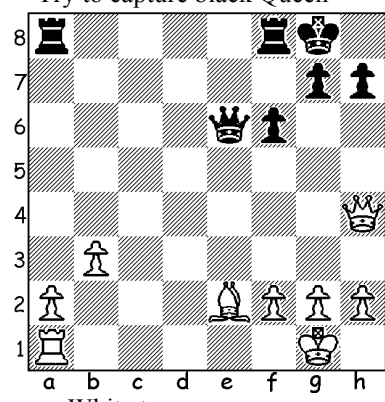
Moving black knight would endanger the Queen

How to capture black Knight?



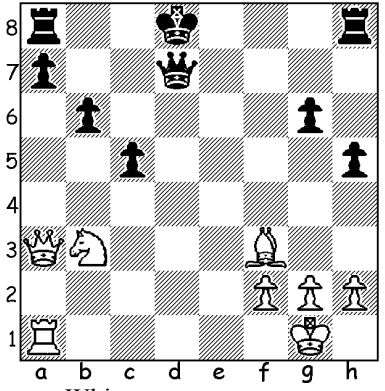
White to move

Try to capture black Queen



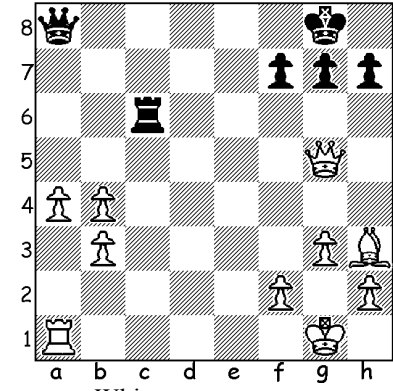
White to move

Pin leads to Queen's capture



White to move

How to catch the black Rook?



White to move

