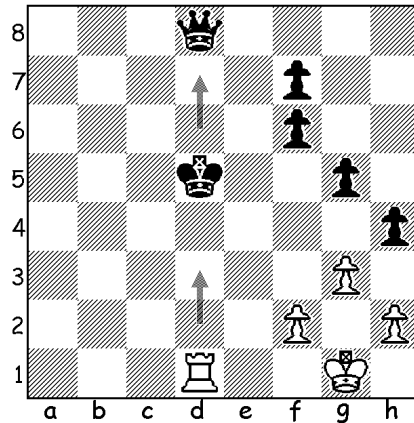


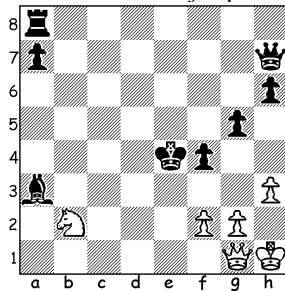
NAME \_\_\_\_\_

## SKEWERS

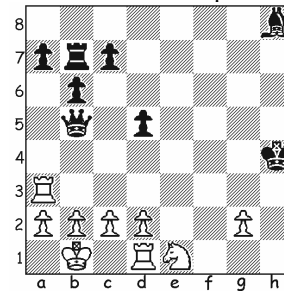
A skewer is an attack on two pieces on the same rank, file, or diagonal. A skewer can be considered a 'reverse pin' with the difference being that in a skewer, the more valuable piece is in front of the piece of lesser or equal value.



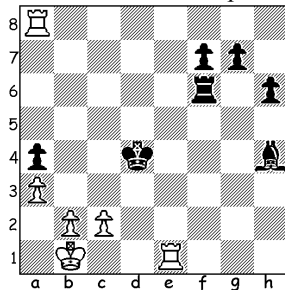
White wins a major piece



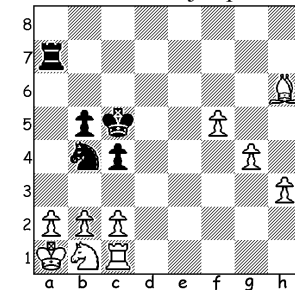
White wins a minor piece



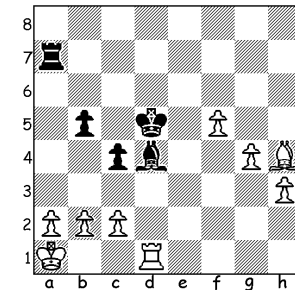
White wins a minor piece



White wins a major piece



Can white win a rook?



It was really easy this time, wasn't it? Try to look for skewers anytime your opponent's king is not protected enough or stays on the same file, diagonal or rank as queen, rook (major pieces) or bishop, knight (minor pieces). One successful skewer often decides the result of the entire game!

