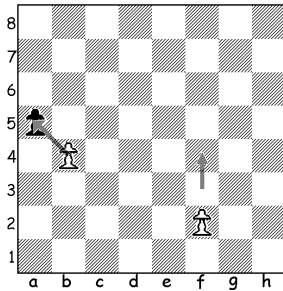


Name \_\_\_\_\_

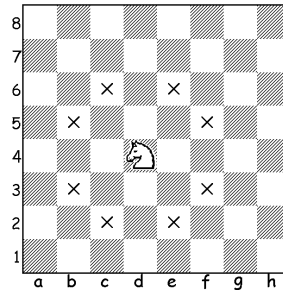
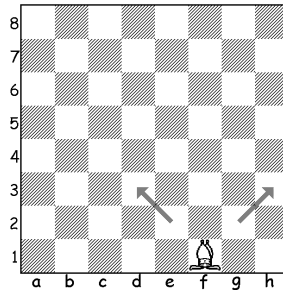
## MOVES AND VALUE OF PIECES.

You need to know the power of each chess piece. Piece able to move into more squares and attack more opponents' soldiers is more powerful than piece with limited resources.

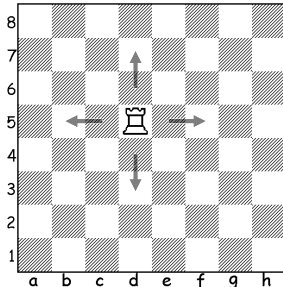
**Pawn** moves only forward and captures only diagonally.  
**Its value is 1 point**



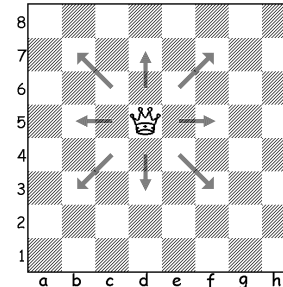
**Bishop** moves diagonally. Its value is 3 points.  
**Knight** has L-shape moves; it can jump over pieces. Knight's value is also 3 points



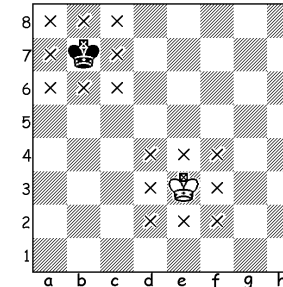
**Rook** can move forward, backwards and sideways  
**Rook = 5 points**



**Queen** moves diagonally, forward, backwards and sideways  
**Queen = 9 points**



**King = Whole Game!**



**Remember: King cannot be removed from the board!**

